

X-One Plus_{MDT} Mobile Data Terminal

 Windows Embedded
Compact 7



X-One Plus_{MDT}

 Digitax
AUTOMOTIVE ELECTRONICS

X-One Plus_{MDT}



DUAL CPU

Primary CPU Freescale ARM CORTEX A8 iMX 53 1 GHz processor Hw Graphic accelerator, open GL Hardware for 3D navigation and the ARM architecture allows this Device to supply a remarkable flexibility and efficiency in computing power, together with reduced power consumption. Secondary CPU AITP (Automotive Intensive Task Processor) supplies the necessary functionalities in the automotive field, like power management, Safe Shutdown, Wheel Pulses Odometer, Distance and Speed calculation, Wake-Up on Ring, Over-the-Air services for software and firmware updates. The AITP is OTA programmable for remote automatic firmware upgrade, and is always powered ON; it can turn-ON and OFF the Device and all its peripherals.

IDEAL FOR FLEET MANAGEMENT AND JOB DISPATCHING

The Device represents the state-of-the-art device for job dispatching and fleets management, an ALL-IN-ONE powerful and compact solution. Its modem GPRS/EDGE (optionally also UMTS) allows very reliable communication with operating headquarters. The vehicle is located by the high performance GPS U-Blox 6 receiver with 50 channels, and compatible with the new European positioning system GALILEO. Both GPS and GPRS modules can be powered ON and OFF regardless of Windows CE status. An Hardware MUX Port is available which allows to send AT commands to the modem while the device is connected in GPRS, for example to request connection status, signal diagnostic and modem statistics.

CUSTOMIZABLE USER INTERFACE

The 7 inches 16:9 clear readable TFT Displays with 800x480 resolution allow to develop versatile and high accessible applications, thanks also to the integrated TouchScreen controller, and to the 6 keys with LEDs available. Hardware Keys avoid consumption and damage of Touch Screen for heavily used operations. The ambient light sensor allows to choose an optimal brightness of the display in any environmental light. The power key is a Smart Power Button, completely programmable and used to perform several important tasks such as:

- normal press to start from System Disk
- long press to start from microSDHC Card
- long press to Shutdown CE safely

Can be also disabled or programmed to trigger Ghost Mode (fake shutdown).

DOUBLE BOOT FEATURE

Through this powerful functionality is possible to restore and to update the entire system anytime, starting from user application up to the complete operating system and all the CPU firmware. The system is able to boot from two different disks:

- 2 microSDHC for large data storage (large maps, images, movies, logs) and for service (system initialization or restore).

STEALTH MODE

Stealth mode is a special operating mode in which the system is working but the display is OFF. This feature can be useful in several situations:

- Driver Control: System has also the wake up on ring feature, so at the central it is possible to remotely turn-ON the device (also in stealth mode so nobody can see that it is starting) in order to check vehicle position, internal audio listening and other data.
- Ghost Mode: It is possible to set the device so that after pressing the shut down but on the system goes on stealth mode instead of turning OFF. This feature is useful if you want the device to remain always ON (it turns OFF only the display, reducing power consumption) or in an alarm situation.
- Alarm managing: If system is OFF and alarm but on is pressed the system can be started in stealth mode, so nobody can see that the system starts. On this special start the system can be programmed for example to send an alarm message to the central, GPS position or also screenshots or audio..

HIGH AVAILABILITY

The Device can withstand glitches at car start, or power loss problems thanks to the external UPS Battery system, that is automatically recharged. The AITP processor gives time to user applications and Windows to close gracefully and safely in case of sudden disconnection of the Main Power.

INPUTS AND OUTPUTS

The Device supplies a wide range of communication channels with the external environment: two Hi-Speed USB 2.0 Host, one USB Device and up to 7 Serial Ports. The special programmable digital inputs and outputs allow to control devices and read signals coming from generic external equipments.

RGB analog video Camera input, with Infra Red power management

Technical Specifications

Display

Viewing area 7" diagonal
Aspect Ratio 16:9
WVGA 800x480 Resolution
Colour TFT LED Display
Display clearly viewable with 350 cd/m2
Ambient Light Sensor with 32 Steps Automatic Regulation
Secondary Intractive Display with independent content

Touchscreen

Automotive Full Rugged Pen/Finger Touchscreen.
Extended Temperature Range

CPUs

Fanless Device with Primary CPU Freescale ARM CORTEX A8 iMX 53
1 GHz processor Hw Graphic accelerator, hardware based open GL for
3D navigation
Secondary M16 CPU for Automotive Intensive Tasks

Ram Memory

512MB up to 1GB RAM Memory

Storage Memory

2 microSDHC up to 32 GB (High Capacity compatible) socket

Communication Modem

GSM/GPRS

GSM / GPRS Class 12 HSPA Modem
Modem can be powered on when the terminal is off.
Wake-up on ring programmable features
Warm reset and cold reset (dedicated electronic circuit) available
through API calls
2 Hardware RS232 Serial Ports available on the modem (Hardware
MUX) allow both RAS and AT command from user applications
2 Sim Card slots with Software switcher available through API calls
Support international standard protocol (ETSI AT command set)
Supports RAS (Remote Access Service) dialup function
GPS / GPRS Rugged Combo antenna (option)

or HSPA

Modem can be powered on when the terminal is off.
Wake-up on ring programmable features
Warm reset and cold reset (dedicated electronic circuit) available
through API calls
1 USB, 1 Hardware RS232 Serial Ports available on the modem
(Hardware MUX) allow both RAS and AT command from user
applications
2 Sim Card slots with Software switcher available through API calls
Support international standard protocol (ETSI AT command set)
Supports RAS (Remote Access Service) dialup function

GPS Receiver

Ublox 6 SuperSense with Indoor Navigation, new generation GPS
chipsets with improved precision and fast acquisition of position fix on
start up and sleep mode

50 Channels, 2 Million correlators, GALILEO Compatible

Antenna Monitor (Disconnection and Short Circuit Detection /
Protection)

- Hot starts: 1 s
- Warm starts: 26 s
- Position accuracy < 2.5m CEP

Supports international NMEA standard format and proprietary UBX
Binary protocol

Messages interval up to 5 Hz Frequency

Assisted GPS (A-GPS) available

GPS / GPRS Rugged Combo antenna (option)

Dead Reckoning (option)

USB Ports

2 USB 2.0 Host (with USB Support for Mouse and Keyboard) Hi-Speed
1 USB 2.0 / OTG Host / Device

Hardware Keys

6 Lighted and Software programmable Hardware Buttons

Power on key

1 Power On/Off button

Serial Ports

1 External Full Modem RS232 Port
2 External TX/RX RS232 / RS485 Port
4 External RS232 Serial Ports (option)

I/O ports connection

3 Digital Inputs
3 + 5 Power Output Ports
Dedicated Ignition input
2 Analog Ports input
External Speakers output
External Microphone input

Alarm and Security

Panic Button input / Emergency Switch input
Stealth Mode Controller (system ON display, audio and lightings off)
RGB analog video Camera input, with Infra Red power management
Internal USB video Camera input, with Infra Red power management

Stealth Display Feature

Fully Programmable Stealth display mode, Screen saver mode and
sleeping mode by Power Button - Hardware Keys - API
Enable Switching Off LCD without powering down MDT unit.

Multimedia

Internal and external Speaker and Microphone
Supports wave speaker volume control
API provided
Playback wave and speech files

| |
|---|
| Boot |
| Dual Boot available from 2 microSDHC Card |
| Boot Time < 12 sec |
| Customizable Boot Up Splash Screen with End-User Logo |
| Soft/Hard Reset |
| Soft Reset available through HW switch |
| Soft Reset available through API calls |
| Hard Reset available through microSDHC Card (Factory default) |
| Connectivity |
| Ethernet: 10/100 Mbps LAN Controller |
| Wi-Fi Connection |
| Bluetooth class 2 |
| Safe Windows shutdown procedure. |
| Preshutdown notification |
| Disk Activity Signal Control |
| External UPS (option) |
| Operating System |
| Windows Embedded Compact 7 with ATL, MFC, .NET Compact Framework 3.5 and Digitax Framework 4.1 |
| Development Tools |
| ActiveSync 4.5 (last version available) and USB debugging with ActiveSync support |
| SDK for Embedded Visual Studio 2008 / 2005 |
| Sample code for SDK in C++ |
| Compact Framework 3.5 supported |
| Digitax Framework 4.1 (Digitax Libraries): GPS, GPRS, VoiceCall, I/O, Odometer, Taximeter, Hardware Keys, WatchDog, OTA, Windows Status, Stealth Mode Controller, Logs, Backup And Restore, Light Dimmer, Hardware Identification, Splash Screen, Alarm, Card Reader and Windows Status |
| Serial port driver and test tools |
| Digital I/O driver, API (DLL) and test tool |
| Read/Write Windows CE registry application and API to Supports permanent saving of system settings into registry |
| Software controllable Warm Restart and test tool |
| GPRS modem driver and test tool |
| GPS driver and test tool |
| Speaker and MIC test tool, wave playback and voice recorder |
| Contactless / NFC reader driver and test tool |
| Backlight control API and test tools |
| Ping tool |
| Dialup network |
| GSM phone dialer |
| Support network protocol TCP/UDP, IP, PPP and others |
| Virtual keypad |
| Text file editor |

| |
|---|
| Explorer |
| Text-To-Speech |
| Support 3rd party Text-To-Speech |
| Software Navigation |
| Support 3rd party map application and navigation software with SDK |
| System diagnostic tools |
| On Field Test (OFT) OnBoard Diagnostic Utilities included, with Customizable CheckList to make tests of GPS Fix, GPS Antenna, GPRS Connectivity and Base Station Signal Quality, Odometer, Ignition, Panic Button, TouchScreen calibration, Hardware Keys, Ambient Light Sensor, Device version, OS Version, AITP Version, Taximeter, UPS and Battery Status, Roof Light, Navigation Software |
| All On Field Tests and enrolling features can be used during first installation and swap of devices. |
| OS Image Loader |
| Over The Air (OTA) OS image loader or microSDHC Card Image Loader |
| System Update Fleet Management |
| Professional OTA (Over The Air) CLIENT allows the update of the whole Operating System and all the CPUs Firmware (option). |
| Professional OTA (Over The Air) SERVER with vehicles enrolling, group management and selective update, remote debugging and logging. Web based user interface (option) |
| Taximeter |
| Embedded Taximeter (Full Firmware and TARIF OTA Programmable) |
| Power Supply |
| 8 - 32 V with Surge Protector |
| Battery |
| External UPS Battery Package, Standard Battery Pack 1 hour (option) |
| Mounting |
| All the External Connectors, Accessible slots (such as SIM Card, Micro SDHC, USB, etc.) and Screws are Sealed |
| Operating Temperature |
| -20°C to 70°C |
| Humidity |
| Humidity up to 95% non-condensing. |
| Vibration |
| Vibration Sine wave, 10 ~ 500 ~ 10Hz, 1.5G, 0.37oct/min 3 axis, 1hour/axis. |
| Dust Ingress Protection |
| All connectors covers sealed, no open holes |
| Dimension |
| 204 mm x 120 mm x 35 mm (H x W x D) |
| Weight |
| 545 g |

Option

Mobile Data Terminal with Taximeter Module

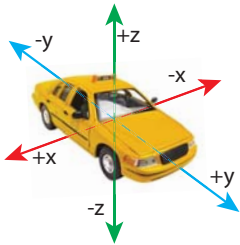
Input for RGB Infrared Onboard Security Camera



Security Camera

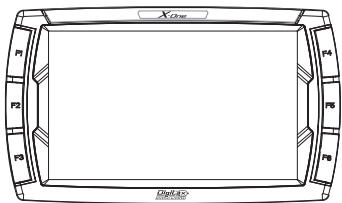


Taximeter Dispatch



Accelerometer

- Odometer antitamper detection
- GPS antitamper detection
- Harsh turn, acceleration and brake detection
- Car tilt



VGA out for extended desktop



VGA Output compatible with market headrest monitor for passengers information media (PIM) with independent content from driver mobile data terminal



3 different taximeter window color sets

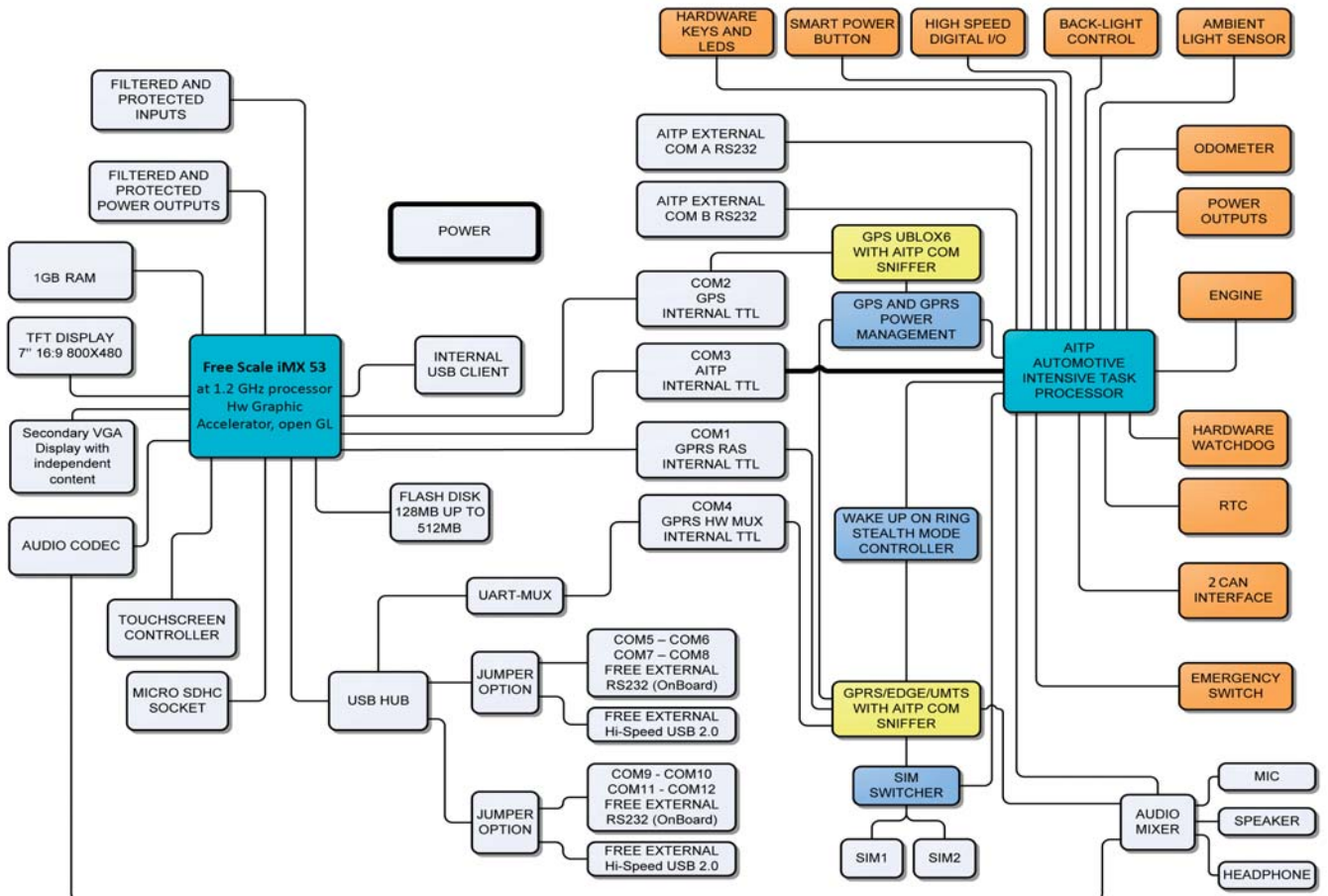
4 different taximeter window positions



Rugged Touchscreen



Block Diagram



X-One Plus_{MDT}



OPERATIVE SYSTEM AND DEVELOPMENT TOOLS

Windows Embedded Compact 7 Operative System and Compact Framework 3.5 combined with the complete Digitax Framework 4.1 allow the developers to create their applications and their services with the maximum simplicity and in very reduced time.



Digitax Italy Headquarter

Via dell'Industria 16 - 62017 Porto Recanati (MC) - ITALY

Phone +39 071 7590984 r.a. - Fax +39 071 9797405

E-mail info@digitax.com - Web www.digitax.com



Microsoft Partner
Silver OEM Hardware

Digitax España

C/Tomás Bretón, 7
28045 – Madrid
SPAIN
Phone +34 902366292
Fax +34 915271562
Web: www.digitax-es.com
E-mail: info@digitax-es.com

Digitax Electronics U.K.

Smokehouse, 31
Tanners Bank North Shields
Tyne & Wear NE 30 1 JH
ENGLAND
Phone +44 (0191) 296 1294
Fax +44 (0191) 257 8438
Web: www.digitax.net
E-mail: digitaxuk@aol.com

Digitax Deutschland

Taxitech Handelsges. mbh
Sommerkamp 31a - 22335
Hamburg
GERMANY
Phone +49 40 555 05540
Fax +49 40 555 05530
Web: www.digitax-de.com
E-mail: digitax@taxitech.de

Digitax Nederland B.V.

Postbus 84112
3009 CC ROTTERDAM
HOLLAND
Phone +31 10 4512121
Fax : +31 10 4500453
E-mail: h.wittenberg@planet.nl
E-mail: info@digitax.nl

Digitax CO. Mauritius

P.O. box 775
Bel Village
MAURITIUS
Phone +230 234 4533/4936
Fax +230 234 5866
Web: www.mtl-co.net
E-mail: mtlts@intnet.mu